

MODIFICATION OF TIN COATINGS BY ION IMPLANTATION

Jerzy NAROJCZYK*, Dmitrij MOROZOW*

*Faculty of Mechanical Engineering, Kazimierz Pułaski University of Technology and Humanities,
ul. Malczewskiego 29, 26-600 Radom, Poland

jerzy.narojczyk@uthrad.pl, d.morozow@uthrad.pl

received 11 January 2016, revised 19 July 2017, accepted 9 August 2017

Abstract: The high-speed steel HS 6-5-2 cutting inserts coated with TiN were subjected to ion implantation with both silicon (dose $2 \times 10^{17} \text{Si}^+/\text{cm}^2$) and silicon with nitrogen ions (dose $(1+1) \times 10^{17} (\text{Si}^+ + \text{N}^+)/\text{cm}^2$) on the subsurface layer of the rake face. Microhardness was examined before and after ion implantation. The composition and structural properties of the subsurface layer were examined by Glow Discharge Optical Emission Spectroscopy (GD-OES). The turning tests of 40H construction steel with the use of the cutting inserts implanted and non-implanted were performed. During the tests the two components of the net cutting force (the main cutting force F_c and feed force F_f) as well as the wear parameters VB on the major flank along with the surface roughness (R_a) were measured. The implanted inserts exhibited higher durability compared to non-implanted ones.

Keywords: Ion Implantation, TiN, Silicon, HSS, Turning

1. INTRODUCTION

Good resistance to impact loads of HSS tools means that they are still used during various types of machining. The limiting factor in their application is faster loss of cutting properties during processing at higher cutting speeds. Improving the wear resistance of these steels can be achieved using several methods, e.g.: by powder metallurgy for the manufacturing (Lindskog, 1993), by the PVD processes for coatings (Keenan et al., 1998) or the use of the ion technology to modify the properties of the steels' surface layer or coatings (Hensel et al., 1989; Narojczyk et al., 2005; Zhang et al., 2004; 2007). Ion implantation into the working surfaces of cutting tools allows to change certain of their characteristics (depending on the choice of dopant elements and the parameters of the process) (Liu et al., 1995; Perez et al., 1999; Shalnov et al., 2011; Mikula et al., 2011; Baojian et al., 2014). Implanted ions change the structure and chemical composition of the surface layer (Sun et al., 2010). The consequence of these changes is an increase of the wear resistance. The research done by other authors (Gerth et al., 2008; Kieckow et al., 2006; Martev et al., 2008; Mikula et al., 2011; Musil, 2012) show that the method of ion implantation can create transition layer with specified composition which enhances the adhesion of the TiN layer into the substrate and thereby improves its utility properties.

Good example of this technology may be the modification of TiN coatings with aluminum, boron or silicon ions, which stabilize the coating at higher temperatures (Zhang et al., 2004; 2007; Yang et al., 2007; Grančič et al., 2014). The purpose of this study was to evaluate the effect of ion implantation of silicon or silicon and nitrogen into the TiN subsurface layer on the properties of the rake face of HS 6-5-2 inserts.

2. EXPERIMENTAL PROCEDURE

For the purpose of the study, the samples from HS 6 – 5 – 2 (SW7M) high speed steel have been prepared in the form of SPUN 1203 04 (Fig. 1) standard inserts, and in the form of 3 mm cylinders with the diameter of 28 mm. The samples were coated with TiN (process: BALINIT®A by Balzers Sp. z o.o. Polkowice). The subsurface layer of the rake faces of all samples were subjected to ion implantation with silicon (Si^+) or silicon with nitrogen ($\text{Si}^+ + \text{N}^+$) ions. Parameters of the process have been presented in Tab. 1.

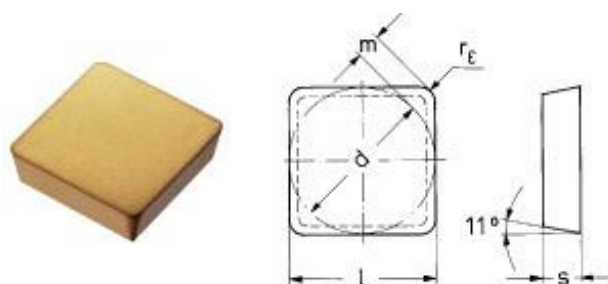


Fig. 1. The SPUN 1203 04 insert from HS 6 – 5 – 2 with TiN

Tab. 1. Parameters of high speed steel HS 6-5-2 inserts implantation.

HS 6-5-2 Inserts	Ion	Energy
Non implanted	-	-
Implanted with Si^+	$2 \times 10^{17} \text{Si}^+/\text{cm}^2$	80 keV
Implanted with $\text{Si}^+ + \text{N}^+$	$(1+1) \times 10^{17} (\text{Si}^+ + \text{N}^+)/\text{cm}^2$	80 keV

The implantation was carried in TITAN direct beam ion implanter with MEVVA type ion source (fig. 2). Vacuum in the

implanter working chamber was at a level of $2 \div 4 \cdot 10^{-4}$ Pa and the sample temperature did not exceed 200°C.

The machining parameters were gathered in the Tab. 2. The turning tests were performed without cooling liquid. The geometry of the inserts used during machining were the following: tool clearance $\alpha_0 = 6^\circ$, tool rake angle $\gamma_0 = 5^\circ$, tool cutting edge angle $\kappa_r = 75^\circ$, corner radius $r_\epsilon = 0.4$ mm (Fig. 3).

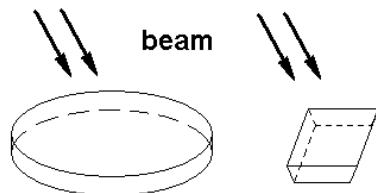


Fig. 2. The samples used for the tests

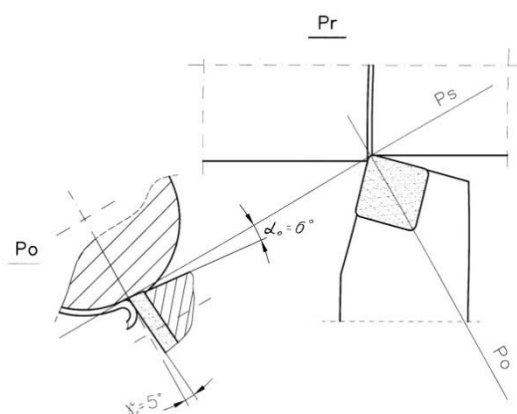


Fig. 3. The geometry of the insert used during turning

Tab. 2. Cutting conditions for the turning tests

Cutting speed v_c [m/min]	Feed rate f [mm/rev]	Cutting depth a_p [mm]
50	0.1	1

In order to determine the changes in the subsurface layer of the TiN coatings caused by implantation, the element composition analysis was performed on cylindrical samples. The Glow Discharge Optical Emission Spectrometry (GD-OES) was performed on JY 10000 RF spectroscopy by Jobinn Yvon. This is a known method used for analyzing the chemical composition of the surface layers (Barbaszewski et al., 1989; Seidel et al, 1997). Atoms are sputtered from the sample surface in an argon (Ar) glow discharge. The sputtered atoms recombine with electrons in the plasma discharge. The light emitted from this recombination is analyzed using an optical emission spectrometer in order to obtain a depth profile of chemical composition (Fig. 4) (Toshiba, 2015).

The following elements were found in the surface layer: titanium (Ti), chromium (Cr), nitrogen (N), silicon (Si), tungsten (W), molybdenum (Mo), vanadium (V), and iron (Fe). Results have been presented in the Fig. 5.

Hardness measurements of layers prior and post implantation were done with the Vickers 402 MVD hardness meter by Wilson Wolpert.

Turning tests on annealed 40H steel of hardness 180 HB were performed on prepared samples. Tests were performed on AVIA Turn 30 turning machine. The wear of the samples was determined by periodic measurements of the wear parameters VB on the major flank (Fig. 6) using microscope. The measurements of the surface roughness of the machined surfaces (R_a) were performed on SJ301 by Mitutoyo after each turning (Fig. 7).

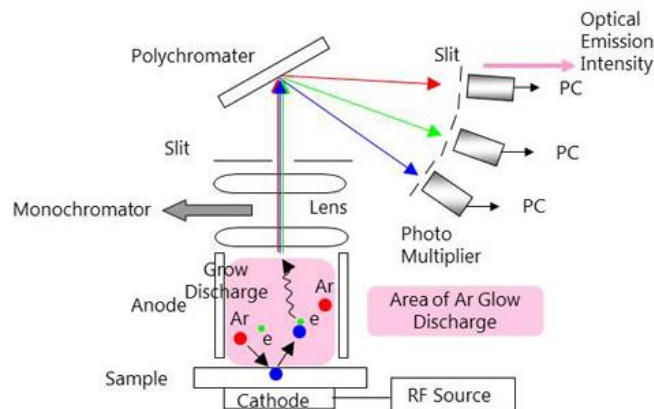


Fig. 4. Principle of operation RF GD-OES (Toshiba, 2015)

The forces during machining were measured with load cell dynamometer capable of measuring cutting force F_c and feed force F_f components. The average values were presented in the Fig. 8.

3. RESULTS AND DISCUSSION

The results of hardness measurements for both, implanted and non implanted TiN layers indicate a slight increase of silicon implanted layer, whereas in the case of silicon plus nitrogen implantation, the hardness decreased (Tab. 3).

Tab. 3. Hardness of the TiN coatings

HS 6-5-2 Inserts	Hardness [HV0.1]
Non implanted	940 ± 27
Implanted with Si ⁺	965 ± 32
Implanted with Si ⁺ + N ⁺	870 ± 22

The former case is the effect of introduction of the silicon ions into the crystal lattice, the latter is probably due to nitrogen ions knocking out previously implanted silicon ions from the TiN surface layer.

The results of chemical analysis of the HS 6-5-2 inserts' TiN surface layers are presented in the Fig. 5.

Implanted layers indicate the presence of silicon with maximum at a certain depth from the surface (which is innate to this kind of processes).

Measurements of HS 6-5-2 steel inserts with implanted and non-implanted coatings, conducted after machining, indicate significant wear decrease on the major flank (VB parameter), especially in the case of silicon plus nitrogen implantation (Fig.6).

Similar tendency was observed in the case of roughness measurements (R_a) (Fig. 7) of the machined surfaces, especially when silicon plus nitrogen implanted inserts were used, where R_a

decreased by 50%.

The values of cutting forces (F_c) during machining with implanted samples, were observed to be smaller compared with non-implanted case. This is especially clear for the feed force (F_f) in fig. 8. This is probably due to the change in the conditions of friction on the rake face of the cutting insert as a result of ion implantation. Similar results were also observed by other researchers (Shalnov et al, 2011; Yang et al., 2007).

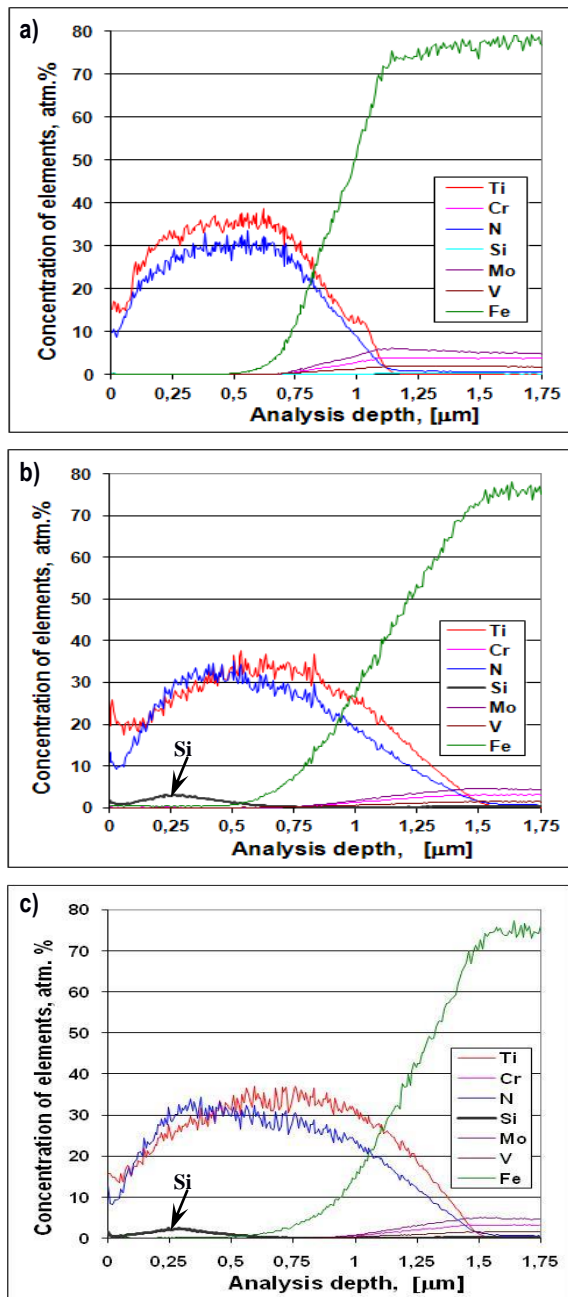


Fig. 5. The chemical composition of the TiN layer on high speed steel HS 6-5-2: a) non implanted, b) implanted with Si, c) implanted with Si+N

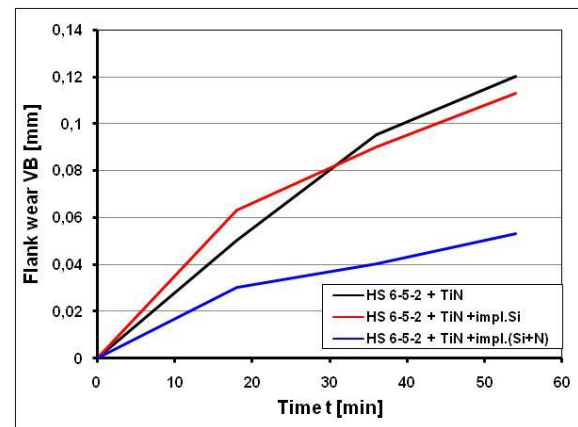


Fig. 6. The mean values flank wear during the turning of steel 40H with the use inserts HS 6-5-2 with TiN

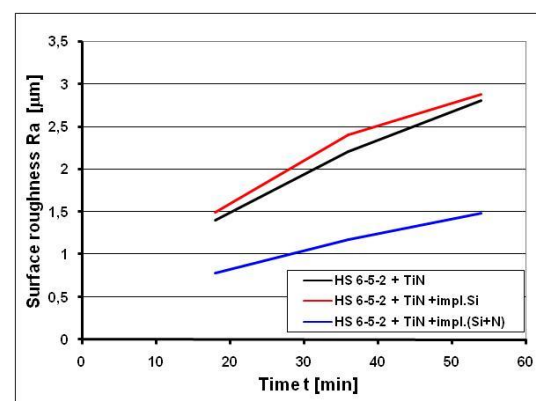


Fig. 7. Average workpiece surface roughness, Ra, during the turning of steel 40H with the use inserts HS 6-5-2 with TiN

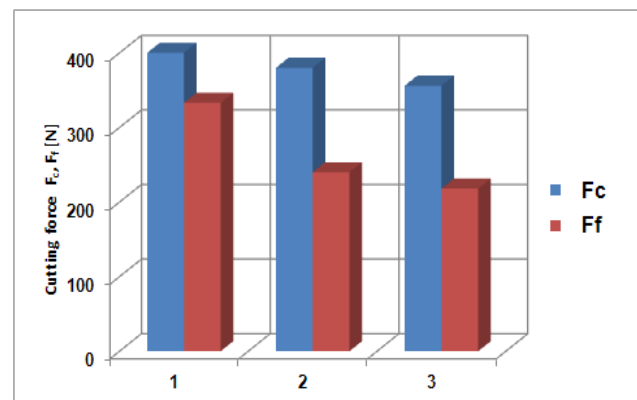


Fig. 8. The mean values cutting forces during the turning of steel 40H with the use inserts HS 6-5-2: 1 – TiN, 2 – TiN implanted Si, 3 – TiN implanted Si + N

4. CONCLUSION

Presented laboratory measurements and machining tests of the inserts made from high speed steel HS 6-5-2 with TiN coating further subjected to ion implantation with silicon and silicon plus nitrogen revealed that:

- significant decrease of the feed force F_f after the silicon and silicon plus nitrogen implantation,

- improved wear resistance on the major flank (VB) especially after the silicon plus nitrogen implantation,
- improved quality of the machined surface (Ra decrease the value to 50% after the implantation of silicon and nitrogen),
- the process of implantation of TiN coating did not cause a significant change in the hardness of the layer.

REFERENCES

1. **Baojian L., Bin D., Ye T.** (2014), Influence of niobium ion implantation on the microstructure, mechanical and tribological properties of TiAlN/CrN nano-multilayer coatings, *Surface and Coatings Technology*, 240, 405-412.
2. **Barbaszewski T., Dąbrowski M., Drwiega M., Gawlik J., Lipińska E.** (1989), Implantation profiles of nitrogen and titanium in low energy bombarded high speed tool steel, *Physica Status Solidi (A) Applied Research*, 112(1), 347-352.
3. **Gerth J., Wiklund U.** (2008), The influence of metallic interlayers on the adhesion of PVD TiN coatings on high-speed steel, *Wear*, 264, 885-892.
4. **Grančič B., Mikula M., Roch T., Zeman P., Satrapinsky L., Gregor M., Plecenik T., Dobrocka E., Hajovska Z., Micusik M., Satka A., Zahoran M., Plecenik A., Kúš P.** (2014), Effect of Si additional on mechanical properties and high temperature oxidation resistance of Ti-B-Si hard coatings, *Surface and Coatings Technology*, 240, 48-54.
5. **Hensel E., Sommer H., Knothe P., Richter E.** (1989), Silicon nitride layer on tool steel produced by ion beam mixing and ion beam assisted deposition, *Physica Status Solidi (A) Applied Research*, 112(2), 533 – 539.
6. **Keenan M.P., Bradbury S.R., Afzal A., Ahmed W.** (1998), Advanced surface engineering of circular saw blades for improved performance, *Surface Engineering*, 14(6), 463-468.
7. **Kieckow F., Kwietniewski C., Tentardini E.K., Reguly A., Baumvol Israel J.R.** (2006), XPS and ion scattering studies on compound formation and interfacial mixing in TiN/Ti nanolayers on plasma nitride tool steel, *Surface & Coatings Technology*, 201, 3066-3073.
8. **Lindskog P.** (1993), Recent developments in European powder metallurgy, *Powder Metallurgy International*, 25, 3, 138-142.
9. **Liu L.J., Sood D.K., Manory R.R., Zhou W.** (1995), Modification of tribomechanical properties of commercial TiN coatings by carbon ion implantation, *Surface and Coatings Technology*, 71, 159-166.
10. **Martev I.N., Dechev D.A., Ivanov N.P., Uzunov T.D., Kashchieva E.P.** (2008), Characterization and properties of highly adhesive titanium nitride and tungsten nitride thin films, Fifteenth International Summer School on Vacuum, Electron and Ion Technologies, *Journal of Physics: Conference Series*, vol. 113 (012025), 1- 4.
11. **Mikula M., Grančič B., Buršíková V., Csuba A., Držik M., Kavecký S., Plecenik A., Kúš P.** (2008), Mechanical properties of superhard TiB₂ coatings prepared by DC magnetron sputtering, *Vacuum*, 82, 278-281.
12. **Mikula M., Grančič B., Roch T., Plecenik T., Vavra I., Dobrocka E., Satka A., Buršíková V., Držik M., Zahoran M., Plecenik A., Kúš P.** (2011), The influence of low-energy ion bombardment on the microstructure development and mechanical properties of TiB_x coatings, *Vacuum*, 85, 866-870.
13. **Musil J.** (2012), Hard nanocomposite coatings: Thermal stability, oxidation resistance and toughness, *Surface & Coatings Technology*, 207, 50-65.
14. **Narojczyk J., Werner Z., Piekoszewski J., Szymczyk W.** (2005), Effects of nitrogen implantation on lifetime of cutting tools made of SK5M tool steel, *Vacuum*, 78, 229-233.
15. **Perez F.J., Cristobal M.J., Hierro M.P., Pedraza F.** (1999), The influence of implanted silicon on the cyclic oxidation behaviour of two different stainless steels, *Surface and Coatings Technology*, 120-121, 442-447.
16. **Seidel F., Stock H. R., Mayr P.** (1997), Glow discharge optical spectroscopy depth profiles of ion implanted steel, titanium and titanium nitride coatings, *Thin Solid Films*, 308-309, 425-429.
17. **Shalnov K.V., Kukhta V.K., Uemura K., Ito Y.** (2011), Applications of combined ion implantation for improved tribological performance, *Surface and Coatings Technology*, 206, 849-853.
18. **Sun P.L., Hsu C.H., Liu S.H., Su C.Y., Lin C.K.** (2010), Analysis on microstructure and characteristics of TiAlN/CrN nano-multilayer films deposited by cathodic arc deposition, *Thin Solid Films*, 518, 7519-7522.
19. Toshiba Nanoanalysis Corporation. Theory of RF glow discharge optical emission spectroscopy (RF GD-OES), (2015), http://www.nanoanalysis.co.jp/en/business/case_example_93.html
20. **Yang J.H., Cheng M.F., Luo X.D., Zhang T.H.** (2007), Surface properties and microstructure of implanted TiN films using MEVVA ion source, *Materials Science & Engineering A*, 445-446, 558-562.
21. **Zhang D., Fei Q., Zhao H., Geng M., Zeng X., Chu P. K.** (2004), Low vacuum MEVVA titanium and nitrogen co-ion implantation into D2 steel substrates, *Surface and Coatings Technology*, 185, 264-267.
22. **Zhang P., Cai Z., Xiong W.** (2007), Influence of Si content and growth condition on the microstructure and mechanical properties of Ti-Si-N nanocomposite films, *Surface and Coatings Technology*, 201, 6819-6823.